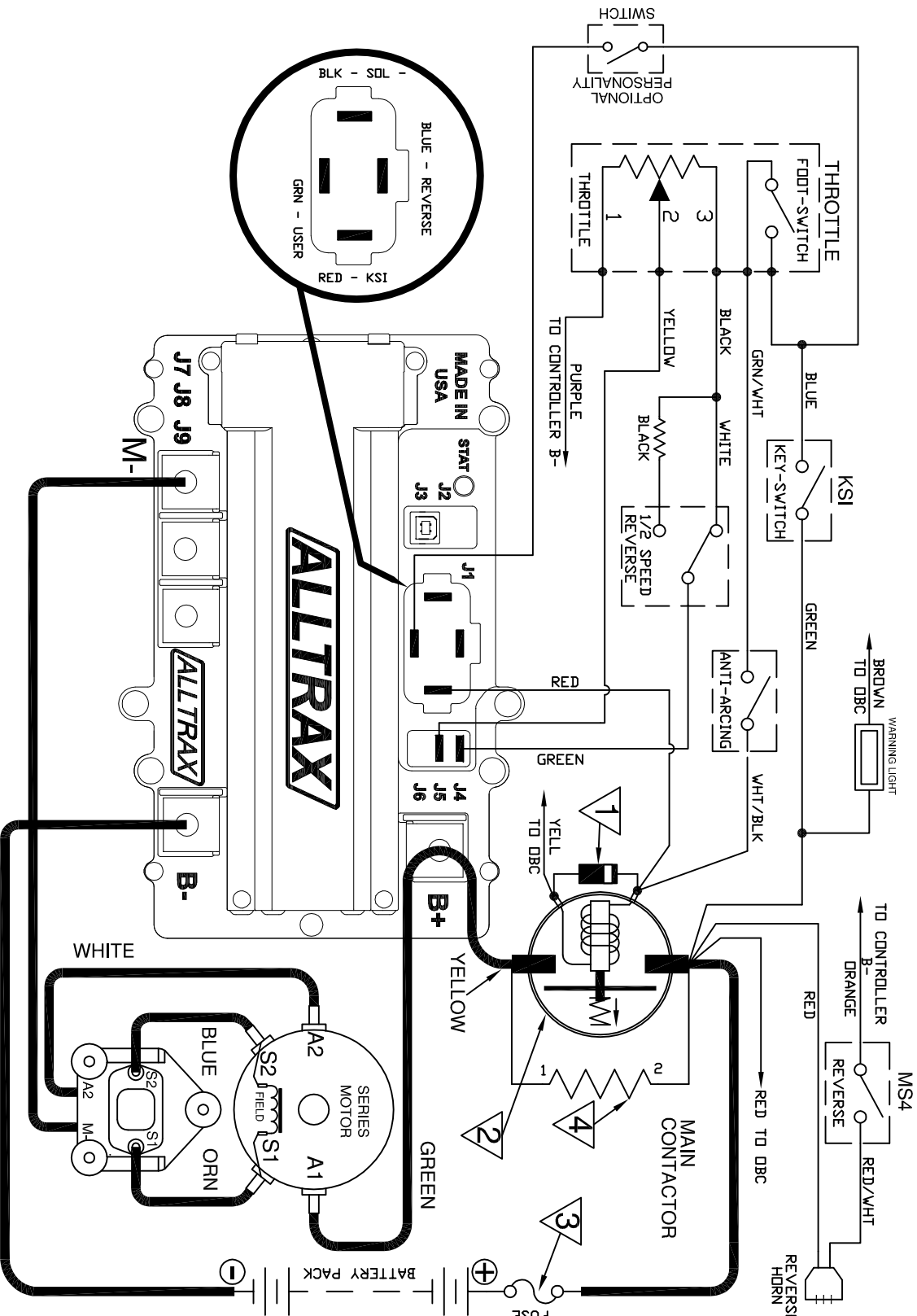


SR to CLUB CAR DS

YEAR: 1995 TO PRESENT

PART NO. DOC110-037



- NOTES:
- * FUSES REQUIRED FOR ALL INSTALLATIONS
 - * DIODE REQUIRED ACROSS COILS / RELAYS
 - * KSI IS REQUIRED TO BE A SWITCHED INPUT, NOT RESISTIVE
 - > ASSUMES FOOTSWITCH IS OPEN WHEN THROTTLE OFF
 - > ALLTRAX RESERVES THE RIGHT TO CHANGE DOCUMENTATION WITHOUT NOTICE
 - > ALLTRAX MAKES NO WARRANTY AS TO THE ACCURACY, SUFFICIENCY, OR SUITABILITY OF ANY TECHNICAL OR OTHER INFORMATION PROVIDED
 - > SEE OPERATORS MANUAL FOR MORE INFORMATION

1	DIODE RATING 1N4001 1N5408 MR754	CONTACTOR RATING DEM 200A 300A TD 500A
2	CONTACTOR RATING DEM 200A 400A	CONTACTOR RATING 300A DR 400A 400A TD 500A
3	FUSE RATING ANN250 ANN400	CONTROLLER RATING 400A DR LESS 450A DR MORE
4	VOLTAGE 35V 48V 72V	RESISTOR RATING 250 OHM 10W 470 OHM 10W 1000 OHM 10W
	POWER WIRE RATING 6AWG-4AWG 4AWG-2AWG 2AWG-1/0AWG	CONTROLLER RATING 300A 400A 500A

REVISIONS		DWG SCALE: NTS	
REV.	ECO.	DATE	APVD
A	033016	033016	RC
B	032217	032217	RC

DRAWN		R CSUK		033116	
ENGR		D.Crockett		033116	
PROPRIETARY THIS TECHNICAL DATA IS PROPRIETARY AND TO ALLTRAX, INC. AND IS REPRODUCED, RELEASED, OR DISCLOSED IN WHOLE OR IN PART WITHOUT THE PERMISSION OF ALLTRAX, INC.					
TITLE SR to Club Car DS Wiring Diagram					
SIZE		DOCUMENT NO.		REV.	
A		DOC110-037		B	
FILE:		_DWG-SR-CLUB-CAR-DS-WIRE-DIA		SHEET 1 of 1	

DO NOT SCALE DRAWING

1111 Cheney Creek Rd.
Grants Pass, OR 97527
PHONE:(541) 476-3565